

1999

MIATA



mazda

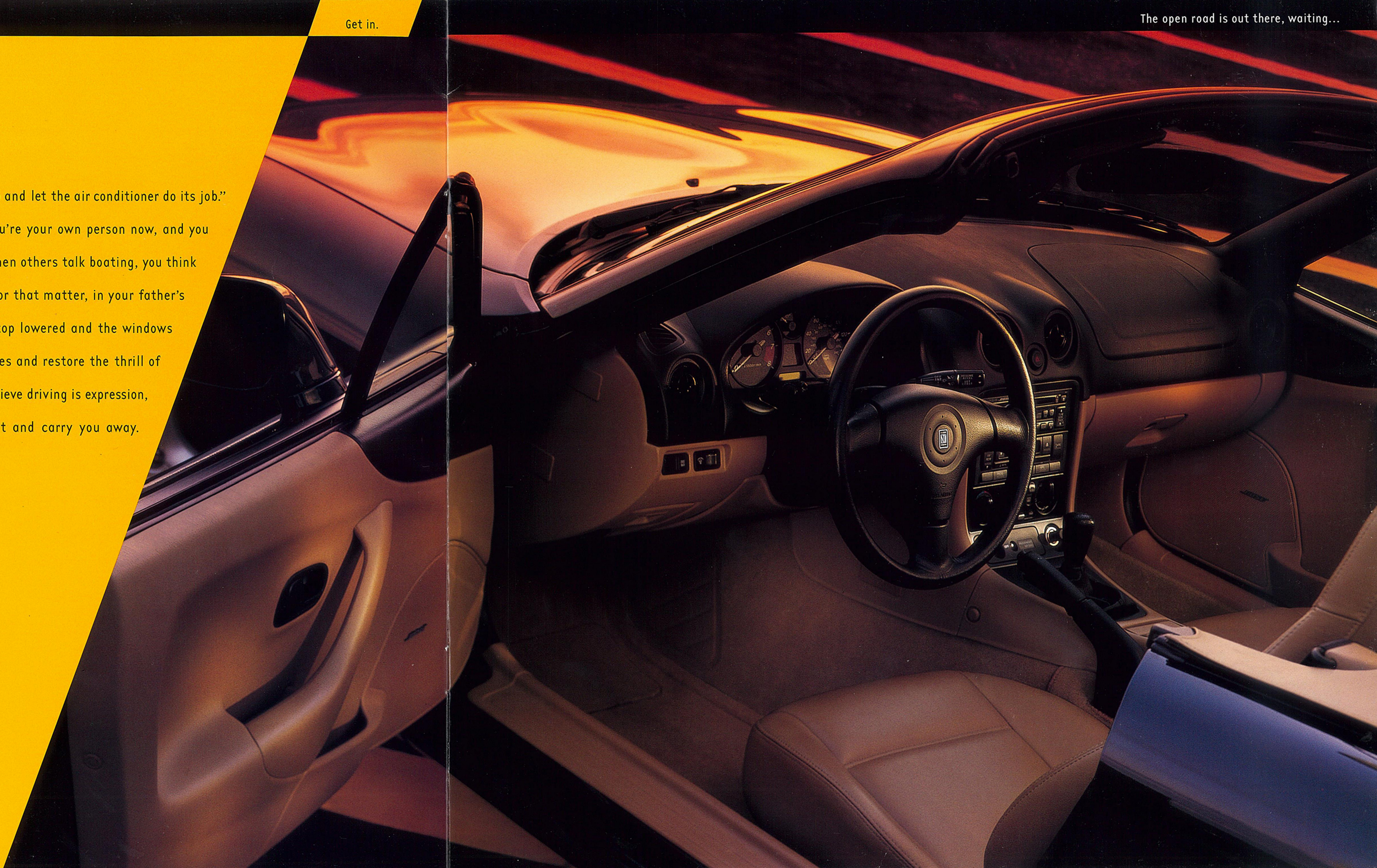
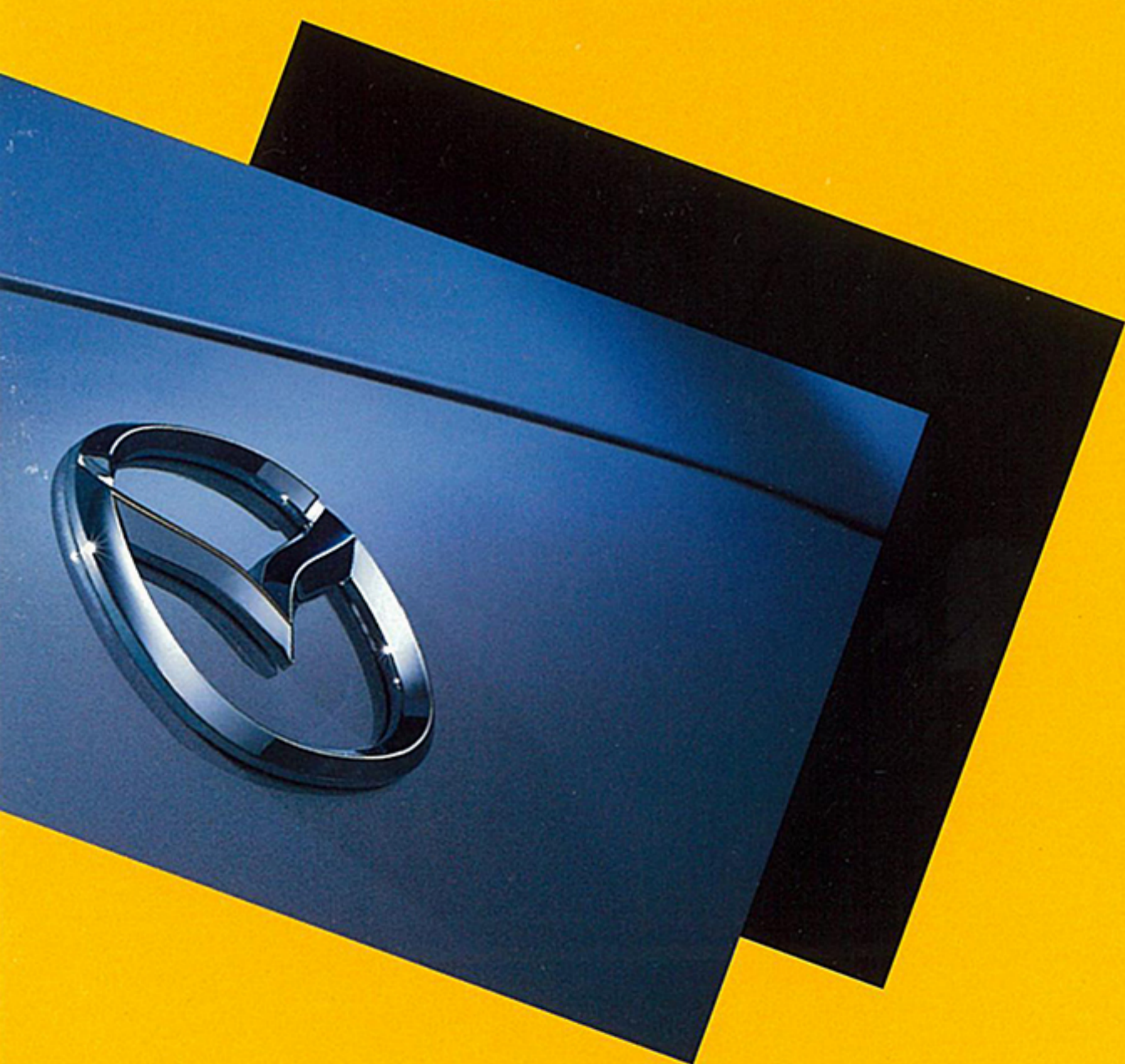
Get in. Be moved.



Get in.

The open road is out there, waiting...

They just didn't get it, your parents. "Roll the windows back up and let the air conditioner do its job." "Be sure to wear your jacket when you go out to play." But you're your own person now, and you make the rules. You just want to get out and have some fun. When others talk boating, you think sailboarding. You wouldn't be caught dead on a tour bus. Or, for that matter, in your father's sedan. For you, the only real cars are convertibles, with the top lowered and the windows rolled down, thank you. Sports cars that live to carve up curves and restore the thrill of the open road. Get a Miata and never look back. At Mazda, we believe driving is expression, exhilaration, liberation. We build cars to capture that spirit and carry you away.



Be moved.

Sun's up, top's down. You can practically feel the lines painted on the road.



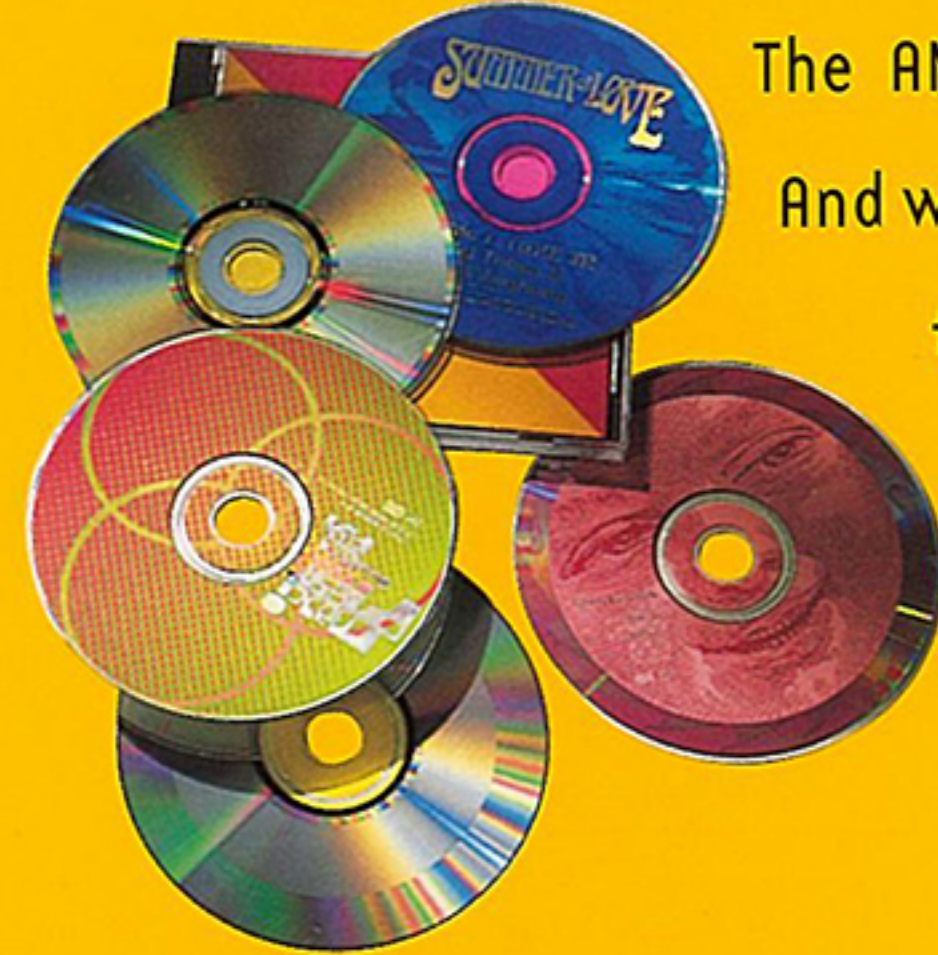
Up ahead, the road winds into the hills, not a motor home in sight. It's early and a little brisk, but the day will soon get warmer, so of course you've already dropped the top on your Mazda Miata. You accelerate. The shift lever flicks so smoothly, with throws so short it feels more like a switch than a lever. Driving this car is visceral, exhilarating. You wind it out before each upshift, savoring the rich exhaust note that mixes perfectly with the sounds of the outdoors. You read the road surfaces through the steering wheel, every turn bringing something new, and you can't get enough of the feeling. You meet the occasional sedan, and you know their drivers envy your freedom and command of the road. The thought of it charges you up. There's a switchback turn ahead. You're in your element.



Miata with Leather Package, shown in Emerald Mica

Your sense of control is immediate.

From the outside, the Miata looks like it owns the road. Sit in it, and that feeling flows through you too. From the way the seat wraps around you to the feel of the steering wheel in your hands, this cockpit is meant for communication. Straightforward gauges, white on black, give you instant readings that let you keep your eyes on the road. Controls are designed for fingertip operation.



The AM/FM/CD stereo is mounted high for convenience. You can easily raise or lower the lightweight top.

And when it's up, you look through a glass rear window, complete with defogger and clearer and more durable

than the plastic of most competitors' cars. A NARDI® 3-spoke steering wheel is standard. Leather upholstery

Miatas also include a Bose® audio system and the Windblocker™ panel that reduces top-down turbulence and raises cockpit temperature. (See page 13 for the complete details.)

And when it's up, you look through a glass rear window, complete with defogger and clearer and more durable than the plastic of most competitors' cars. A NARDI® 3-spoke steering wheel is standard. Leather upholstery



Durable, clear glass rear window.

AM/FM/CD sound system, standard.

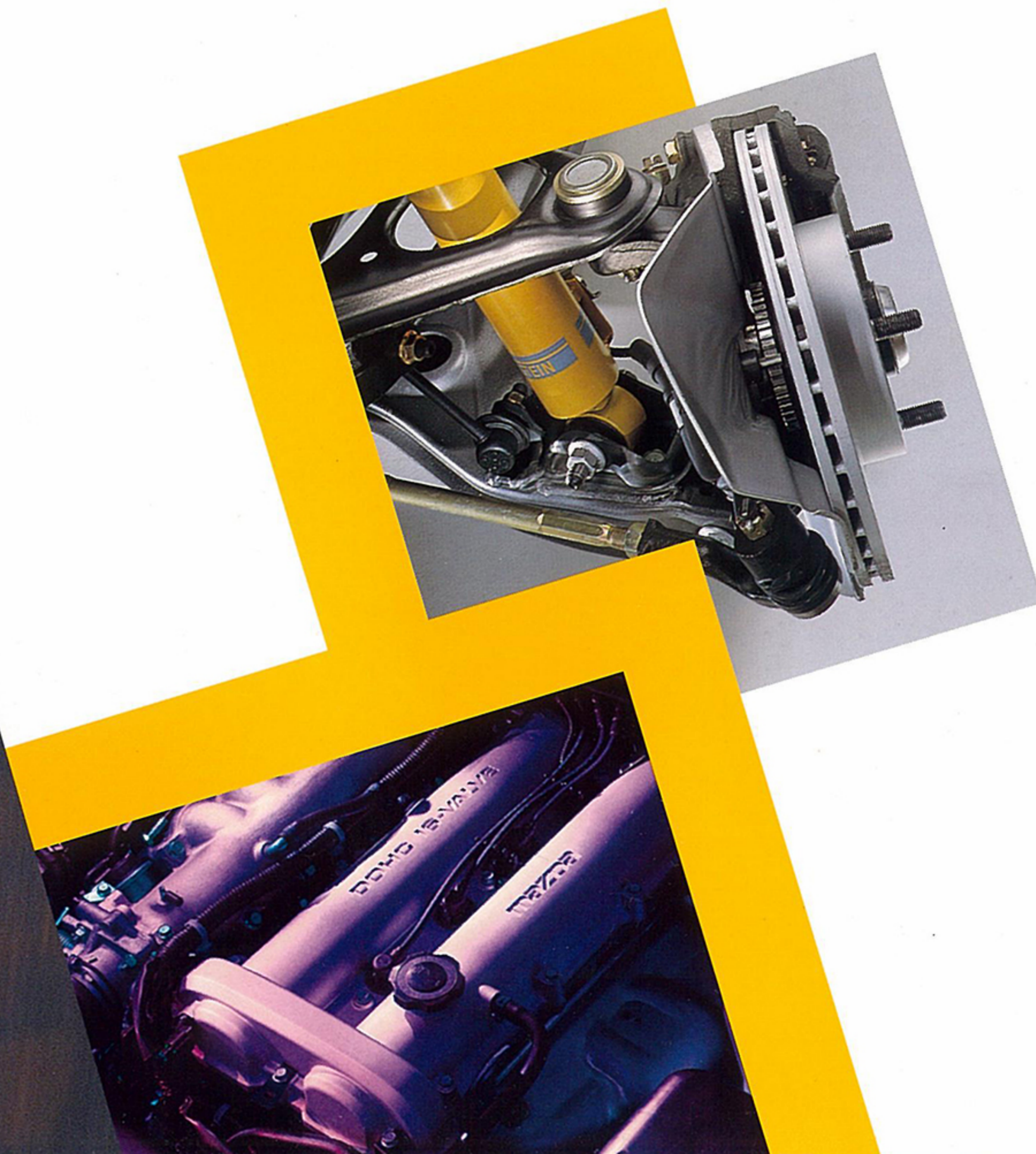


Miata with Leather Package and optional cassette player, shown in Brilliant Black

You'll discover a whole new meaning to "responsive."



While you love an open road, you'll find that the Miata's just about the perfect city car too. With its aggressive styling, it looks the part. Beyond that, the Miata is purpose-built as a roadster from the ground up. Its high-revving engine and ideal sports-car suspension deliver a pure, adrenaline-charged driving experience. The DOHC 16-valve engine has a Variable Intake Control System (VICS), high-compression pistons, and high-performance cam profiles. For lightning-quick yet smooth response, a unique Power Plant Frame (PPF) ties the engine, transmission and differential into one rigid unit. The fully independent double-wishbone suspension and 50/50 front/rear weight distribution give you slot-car-like cornering and control. The coil springs and gas-filled shocks are attached separately to the body to reduce road noise and vibration. Stabilizer bars front and rear reduce body roll. So bring on the city traffic. Change lanes, pass a bus, avoid a pothole. No wonder your smile's a mile wide.



That's why we make the Mazda Miata.



ENGINE

Type	In-line 4-cylinder
Displacement	1.8 liters/1839 cc/112 cubic inches
Construction	Iron block/light-alloy cylinder head
Valve gear	Belt-driven dual overhead camshafts 4 valves per cylinder
Bore and stroke/compression ratio	3.27 x 3.35 inches/9.5:1
Horsepower, SAE Net @ rpm	Fed.: 140 @ 6500 NLEV:* 138 @ 6500
Torque, SAE Net lb-ft @ rpm	Fed.: 119 @ 5500 NLEV:* 117 @ 5000
Maximum permissible engine speed	7000 rpm
Ignition system	Distributorless electronic
Fuel system	Multiport electronic fuel injection
Recommended fuel	Unleaded regular gasoline
EPA estimated fuel economy, city/hwy mpg	Manual: 25/29 Automatic: 23/28

*CA/NY/CT/MA/RI

TRANSMISSION

Type	5-speed manual	4-speed automatic
Control	Manual	Electronic
Gear ratios:		
1st	3.136	2.450
2nd	1.888	1.450
3rd	1.330	1.000
4th	1.000	0.730
5th	0.814	—
Final drive	4.300	4.100



CHASSIS

Frame	Unit body with Power Plant Frame (PPF)
Suspension	Double-wishbone with coil springs Gas-filled shock absorbers Front and rear stabilizer bars
Steering	Rack-and-pinion; available engine-speed- sensing variable power assist Ratio: 18:1 (15:1 w/power assist) Turns, lock-to-lock: 3.2 (2.7 w/power assist) Turning circle, curb-to-curb: 30.2 feet
Brakes	Power-assisted 4-wheel disc 10.0-inch ventilated front rotors 9.9-inch solid rear rotors Optional Anti-lock Brake System (ABS)



DIMENSIONS/CAPACITIES (INCHES)

Wheelbase/overall length	89.2/155.3
Height/width	48.4/66.0
Front/rear track	55.7/56.7
Headroom/legroom/shoulder room	37.1/42.8/49.7
Fuel capacity	12.7 U.S. gallons
Cargo capacity	5.1 cubic feet
Curb weight, lb (manual/automatic)	2299/2348



You can't wait to find what's beyond the next bend.



SAFETY FEATURES:

- Dual air bag Supplemental Restraint System (SRS) with passenger-side deactivation switch*
- Breakaway inside rearview mirror
- Energy-absorbing crumple zones
- Anti-lock Brake System (ABS) (opt.)
- Energy-absorbing steering column and instrument panel
- Center high-mount stop light
- Three-point safety belts
- Rear window defogger
- Side-impact beams
- Dual-circuit 4-wheel disc brakes
- Clutch interlock (manual transmission)
- Shift interlock (automatic transmission)

* Special precautions must be taken when using a rear-facing child restraint in this vehicle. Please review the owner's manual for specific instructions.

MIATA SPECIFICATIONS AND FEATURES

COLOR COMBINATIONS (INTERIOR/EXTERIOR)

- Black Cloth/All colors
- Tan Leather/All colors

Specific combinations of colors and interiors may vary by season and geographical area.

Information and illustrations in this brochure are based on the latest competitive and Mazda product information available at the time of publication. Some equipment shown is optional at extra cost; specific options may be available only in combination with other options. Specific combinations of equipment or features may vary from time to time and by geographic area; colors in illustrations may vary from actual upholstery or paint colors due to reproduction and printing processes. Mazda reserves the right to make changes without notice in product content and price at any time.



STANDARD FEATURES

1.8L DOHC 16-valve engine	Driver's left footrest
5-speed manual transmission	Courtesy light on windshield header
Power-assisted 4-wheel disc brakes	Trunk light†
Rack-and-pinion steering	Door-mounted map pockets
Sport-tuned exhaust system	Passenger's seatback pocket
14-inch styled steel wheels	Locking glove box and console storage box
185/60R14 H-rated radial tires	Dual cup holders
Manual black vinyl convertible top	Remote trunk and fuel-door releases
Black vinyl convertible boot cover	Day/night inside rearview mirror
Glass rear window with defogger	Passenger's vanity mirror
Dual body-color mirrors	Speedometer and LCD trip odometer
2-speed intermittent windshield wipers	Tachometer with 7000-rpm redline
Tinted glass	Temperature and oil-pressure gauges
Free-surface reflector halogen headlights	4-spoke steering wheel with soft-feel rim
Dual air bags with passenger-side deactivation switch	Heater/defroster with 4-speed blower
Reclining bucket seats	Side-window demisters
	AM/FM/CD stereo with digital clock

AVAILABLE FEATURES AND PACKAGES

- Touring Package:** Power-assisted steering; 14-inch alloy wheels with locks; power mirrors; power windows; 3-spoke NARDI® leather-wrapped steering wheel
- Popular Equipment Package:** Touring Package items, plus Torsen® limited-slip differential (manual transmission only); power door locks; cruise control; Windblocker™ antidraft panel with integral storage pouch; upgraded audio system with door-mounted tweeters and power antenna
- Leather Package:** Popular Equipment Package items, plus 15-inch alloy wheels with locks; 195/50R15 V-rated Michelin tires; tan vinyl convertible top; tan interior with leather seating surfaces;‡ Bose® audio system
- Sports Package (manual transmission only):** Torsen® limited-slip differential; front strut-tower brace; sport suspension with Bilstein® shock absorbers; 15-inch alloy wheels with locks; 195/50R15 V-rated Michelin tires; front air dam; rear spoiler; 3-spoke NARDI® leather-wrapped steering wheel
- Appearance Package 1:** Front air dam; side sills; rear mud guards
- Appearance Package 2:** Appearance Package 1 items, plus fog lights and rear deck-lid spoiler
- 4-speed electronically controlled automatic transmission (requires power steering)
- Anti-lock Brake System (ABS) (requires Popular Equipment Package and Bose® audio system, or Leather Package)
- Power-assisted steering
- Bright wheel trim rings
- Detachable body-color hardtop
- Fog lights
- Front and rear mud guards
- Windblocker™ antidraft panel with integral storage pouch
- CFC-free air conditioning
- Bose® audio system (requires Popular Equipment Package)
- Cassette player
- Carpeted floor mats

† Combined with license-plate light; vehicle lights must be turned on.

‡ Seating surfaces upholstered in leather except for vinyl on seat side panels, rear sides of seatbacks and other minor areas.


mazda

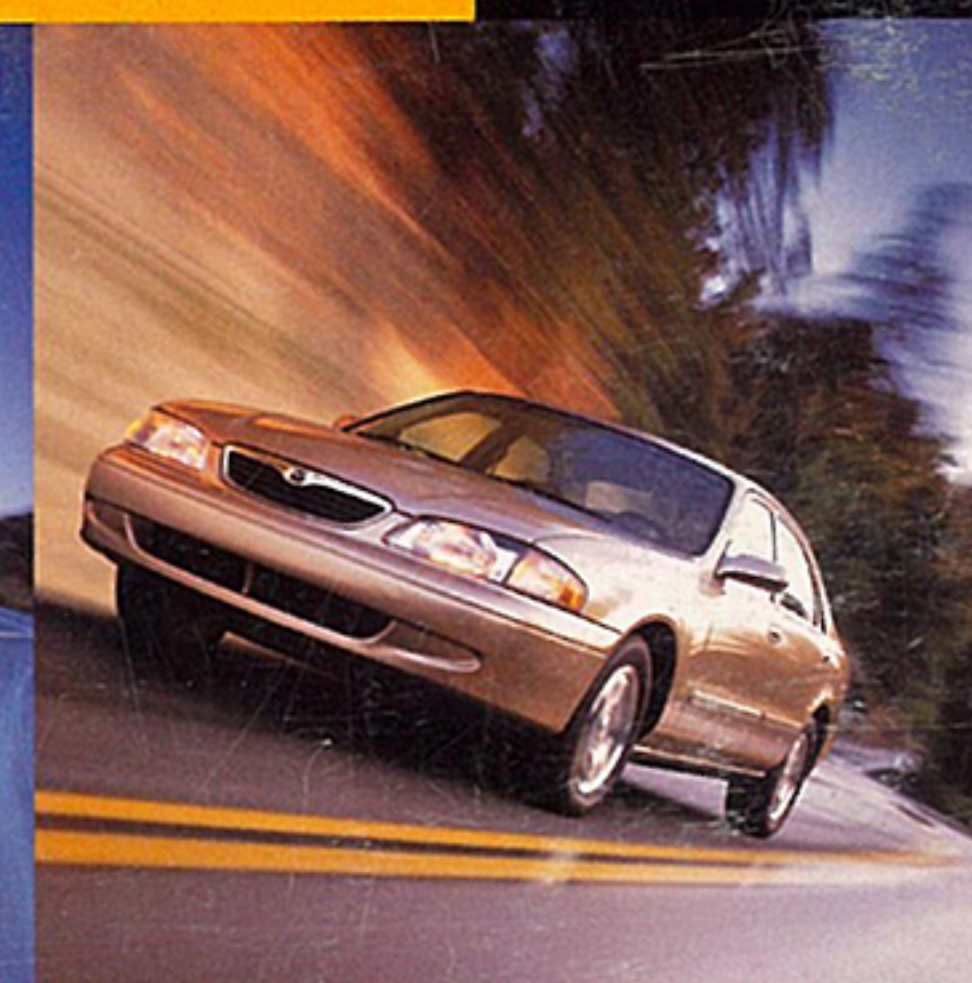
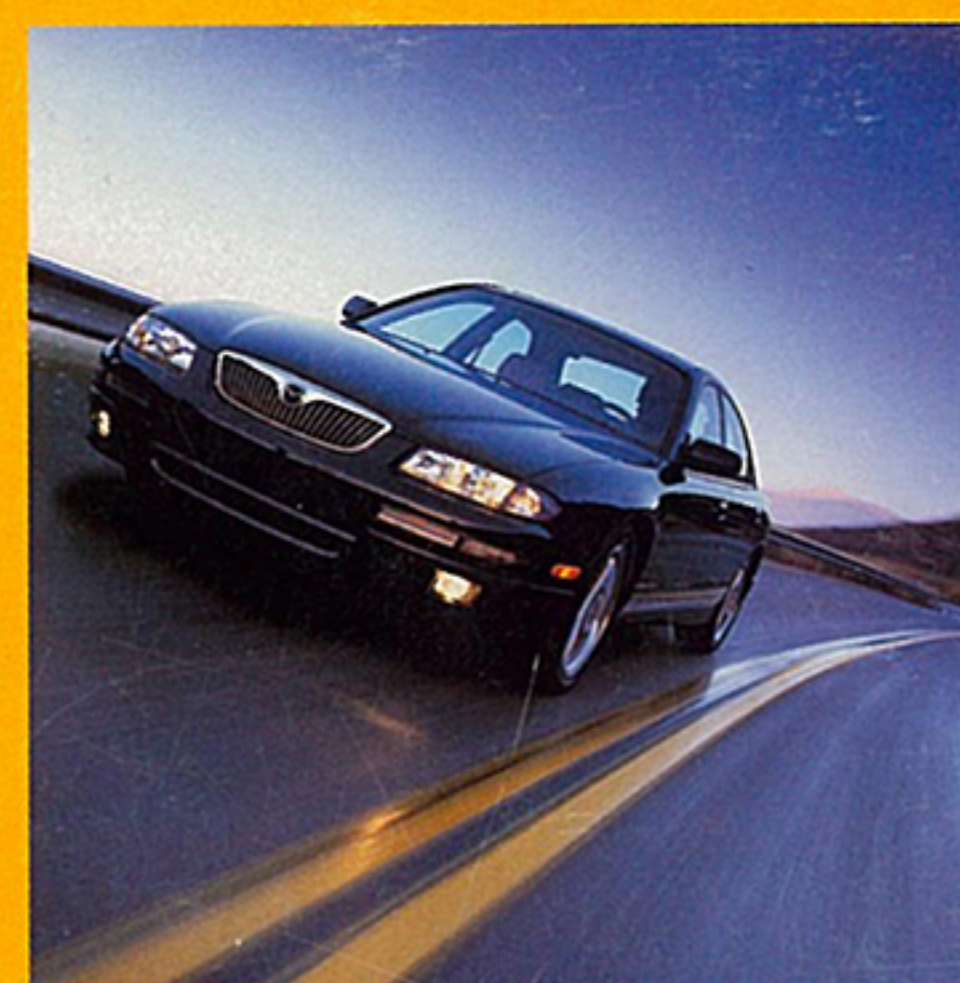
Get in. Be moved.

WARRANTY: Mazda warrants that the Mazda vehicle will be free of defects with normal use and prescribed maintenance for 36 months or 50,000 miles, whichever comes first, or Mazda will repair any problem without charge. Ordinary maintenance items or adjustments, parts subject to normal wear and replacement and certain other items are excluded. This transferable "limited warranty" is free on all new 1999 Mazda vehicles sold and serviced in the United States. See your Mazda Dealer for details.

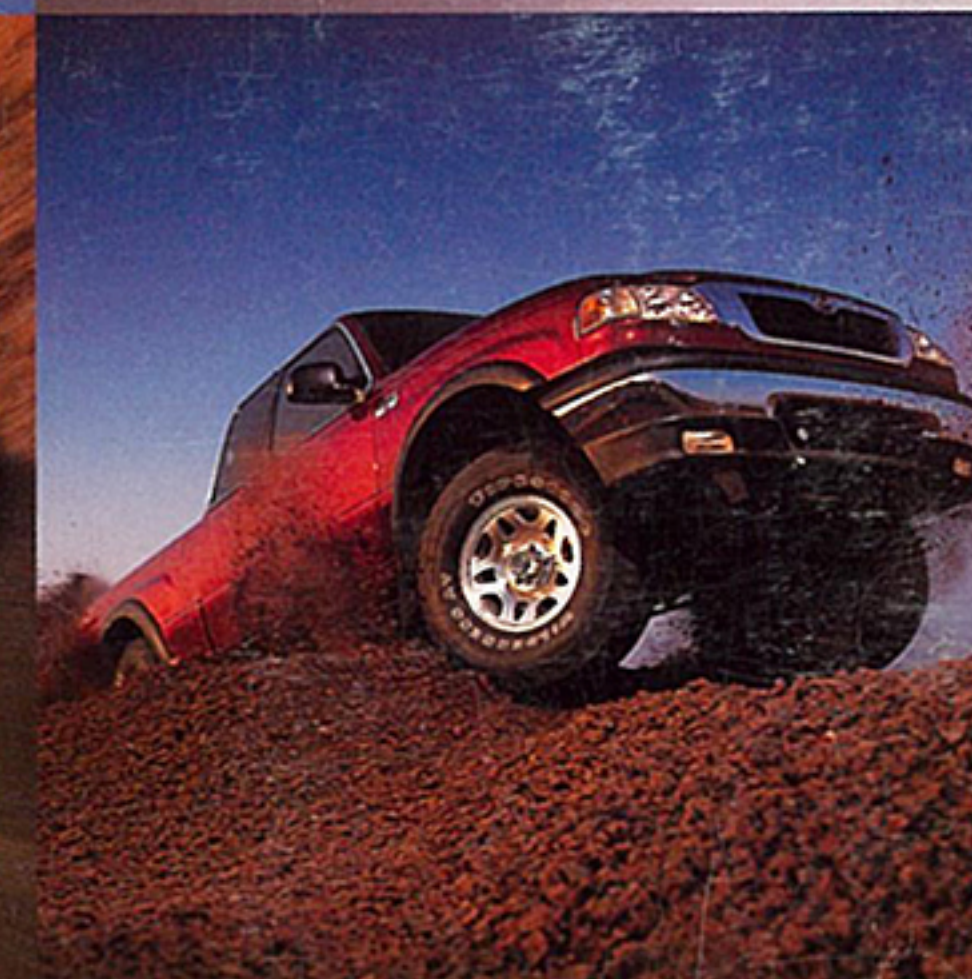
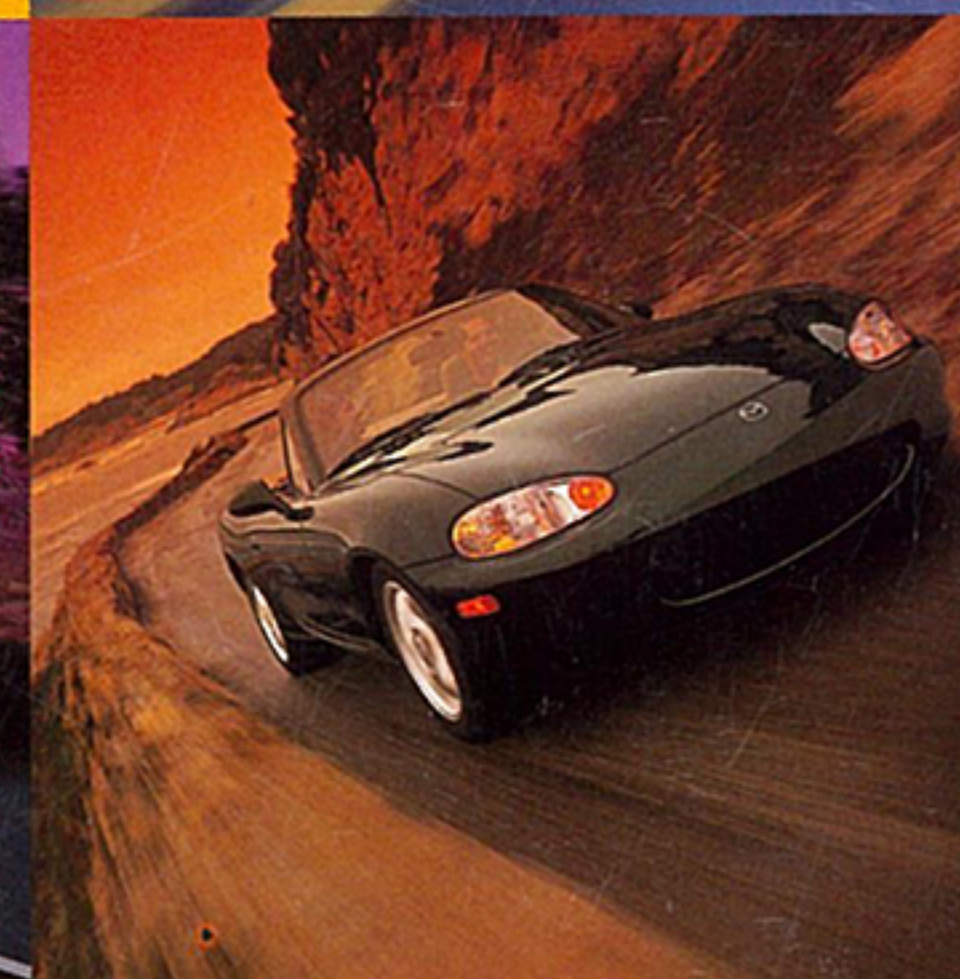
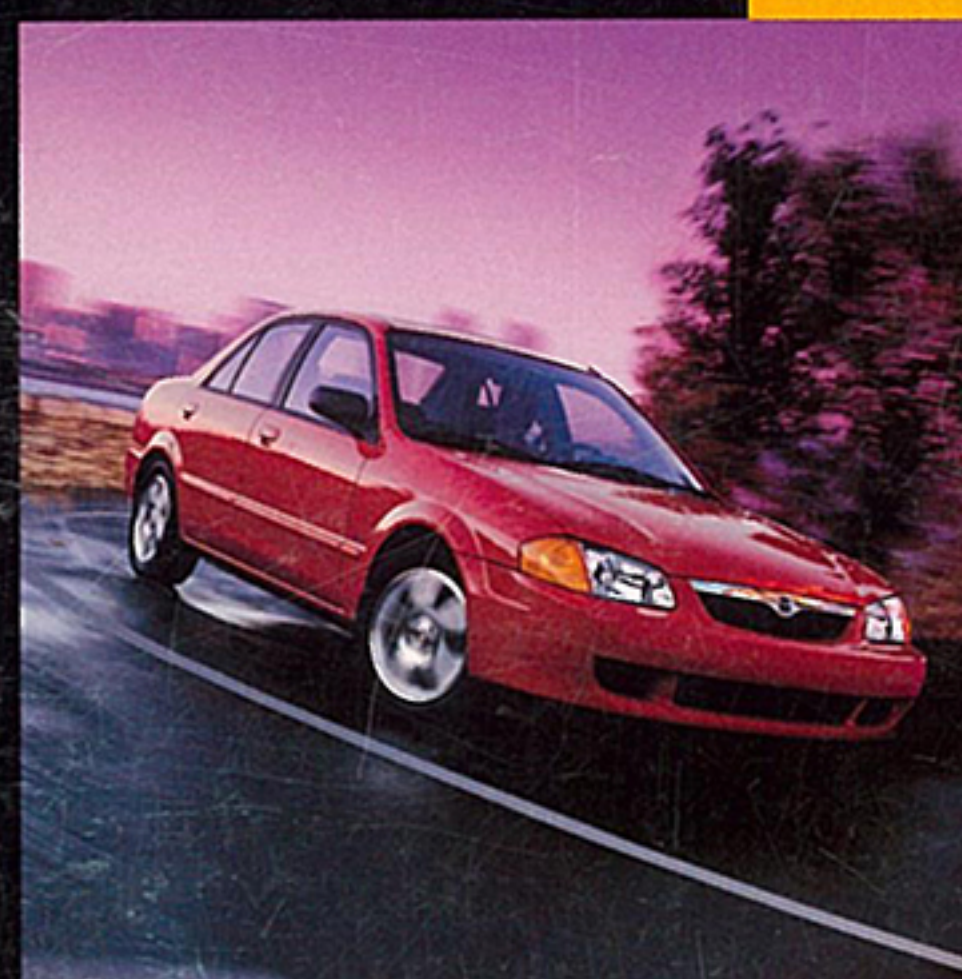
Complement the limited warranty on your new vehicle with the Mazda Extended Protection Plan, the only service agreement backed by Mazda. Ask your dealer for details.

ACCESSORIES: Personalize, protect and enhance your new Miata with Genuine Mazda Accessories. They're designed specifically for your Mazda and are covered by the new-vehicle warranty when installed by a Mazda Dealer prior to or at the time of initial vehicle retail delivery.

MILLENIA



626



PROTEGÉ

MIATA

B-SERIES TRUCKS

SEE US ON THE WEB: Just point your browser to www.mazdausa.com and get interactive with the Miata. Build your own Miata, choose your options, get pricing, finance information and even a map to your nearest Mazda Dealer.

